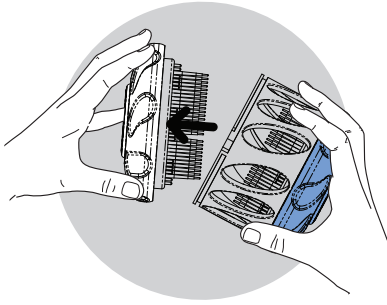
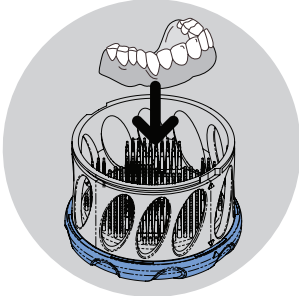


Dr Mark's HyGenie® Quick Start Guide



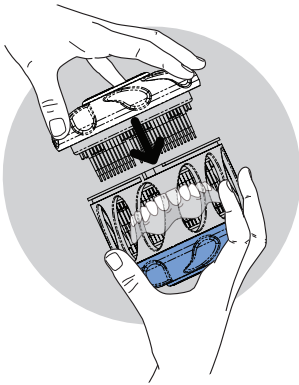
OPEN

- Hold the **blue base** and main body firmly together with one hand.
- Turn the **white top anti-clockwise** until it **clicks** into place, then lift off.



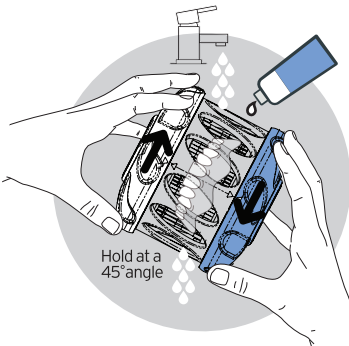
PLACE

- Nestle your appliance into the bottom brushes.



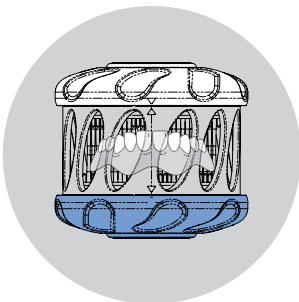
CLOSE

- Hold the **blue base** and main body firmly together with one hand.
- Place the **white top** evenly onto the main body.
- Press the **white top** down firmly, turn **anti-clockwise** until it clicks into place.
- Once in place, make a short twist **clockwise** to lock-in the **white top**.



WASH & RINSE

- Over a sink, add a few generous drops of DentalFresh.
- **To wash**, add a splash of water, hold at a 45° angle and steadily rotate the top and base in opposite directions for about a minute.
- **To rinse**, rotate again under gently running water until the water runs clear.



STORE or WEAR

- **Store** your appliance safely in your HyGenie until you need it next.
- **Wear** your appliance, it's now clean and ready to go.

For advice on removable dental appliance care, more information on Dr Mark's products or to reorder, visit our website www.drmarkshygenie.com or email us at customercare@drmarkshygenie.com



www.drmarkshygenie.com